



## Main features

- Completely flexible element orientation: material pipe, vacuum pipe and receiver body can full 360° rotate independent.
- Easy filter condition clean and check thanks to the lid free of attached elements and vacuum connection is possible also with rigid pipe. Lid is provided with fall protection to avoid finger damage.
- Full glass molded body with integral glass cone fully isolated and protected by high quality heat resistant sealing. Full view on the pellets.
- Standard environment dust free contamination vacuum break valve with paper filter on vent inlet.
- Standard high temperature vacuum break valve body, sealing and pneumatic cylinder.
- Power of 24 V DC 2W stand-by 10W working.
- Compressed air consumption of 0,25 nl/cycle.
- "One piece" flap assembly, no small nonmagnetic metallic parts can drop from discharge cone flap valve, easy maintenance remove flap valve assembly.
- WITH VISNET CONTROL BOX: Advanced control interface in bus system with 4 wire connection. Visual indication of loader status with dot matrix display and small display for detailed description of working state. Bus address show on display and "show me" function to display the address on dot matrix to see from distance. Green yellow and red light signal. Hot connection and disconnection of the receiver in the bus.
- Standard high temperature vacuum break valve body, sealing and pneumatic cylinder.
- In anti-wear version (optional), pellets speed lowering cone and hardened stainless steel flap.
- Capacitive level sensor (optional).



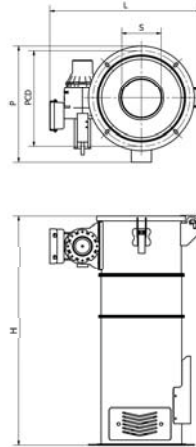
## Technical specifications

Model	Code	Features	Std. pipe diameter	Electric control box	Fixing holes	Body	Weight
2L	02739 02740	metal mesh filter metal mesh filter	30 mm 40 mm	BASIC 01833 VISNET 02787	4 x M6 Ø185	Stainless Steel	6 kg
4L	02741 02742	metal mesh filter metal mesh filter	30 mm 40 mm	BASIC 01833 VISNET 02787	4 x M6 Ø185	Stainless Steel	7 kg
6L	02743 02744	metal mesh filter metal mesh filter	40 mm 50 mm	BASIC 01833 VISNET 02787	4 x M6 Ø240	Stainless Steel	9 kg
6L	02745 02746	metal mesh filter metal mesh filter	40 mm 50 mm	BASIC 01833 VISNET 02787	4 x M6 Ø280	Glass	12 kg
10L	02747 02748	metal mesh filter metal mesh filter	40 mm 50 mm	BASIC 01833 VISNET 02787	4 x M6 Ø240	Stainless Steel	10 kg
10L	02749 02750	metal mesh filter metal mesh filter	40 mm 50 mm	BASIC 01833 VISNET 02787	4 x M6 Ø280	Glass	14 kg
25L	02751 02752 02753 02754 02755 02756	metal mesh filter metal mesh filter metal mesh filter, large discharge metal mesh filter, large discharge metal mesh filter, large discharge, pneumatic flap metal mesh filter, large discharge, pneumatic flap	50 mm 60 mm 60 mm 70 mm 60 mm 70 mm	BASIC 01833 VISNET 02788	8 x M6 Ø280	Stainless Steel	13 kg
50L	02757 02758 02759 02760 02761 02762	metal mesh filter metal mesh filter metal mesh filter, large discharge metal mesh filter, large discharge metal mesh filter, large discharge, pneumatic flap metal mesh filter, large discharge, pneumatic flap	50 mm 60 mm 60 mm 70 mm 60 mm 70 mm	BASIC 01833 VISNET 02788	8 x M6 Ø280	Stainless Steel	17 kg
100L	02763 02764 02765	metal mesh filter, pneumatic flap metal mesh filter, pneumatic flap metal mesh filter, pneumatic flap	60 mm 70 mm 90 mm	BASIC 01833 VISNET 02788	8 x M6 Ø400	Stainless Steel	60 kg
160L	02769 02770 02771	metal mesh filter, pneumatic flap metal mesh filter, pneumatic flap metal mesh filter, pneumatic flap	60 mm 70 mm 90 mm	BASIC 01833 VISNET 02788	8 x M6 Ø400	Stainless Steel	65 kg



## dimensions 2-4-6-10 L

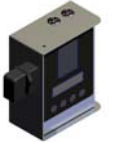
Receiver size	L mm	P mm	H mm	S mm	PCD
2 Liters	375	225	445	∅ 60	4xM6 ∅ 185
4 Liters	375	225	560	∅ 60	4xM6 ∅ 185
6 Liters	420	263	566	∅ 100	4xM6 ∅ 240
10 Liters	420	263	670	∅ 100	4xM6 ∅ 240



BASIC CONTROL BOX

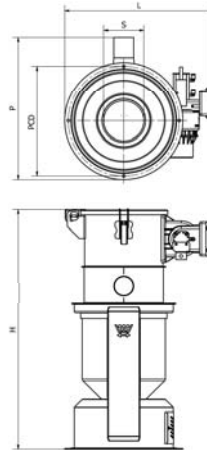


VISNET CONTROL BOX



## dimensions 6-10 L GLASS

Receiver size	L mm	P mm	H mm	S mm	PCD
6 Liters	415	375	610	∅ 100	4xM6 ∅ 280
10 Liters	415	375	750	∅ 100	4xM6 ∅ 280



BASIC CONTROL BOX



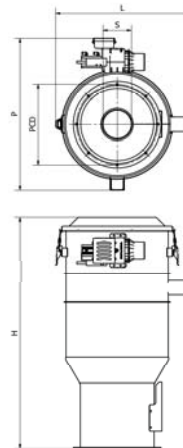
VISNET CONTROL BOX



## dimensions 25-50 L

Receiver size	L mm	P mm	H mm	S mm	PCD
25 Liters *	527	455	800	∅ 100	8xM6 ∅ 280
50 Liters *	527	455	1055	∅ 100	8xM6 ∅ 280

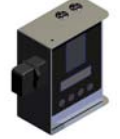
\*available with large discharge



BASIC CONTROL BOX

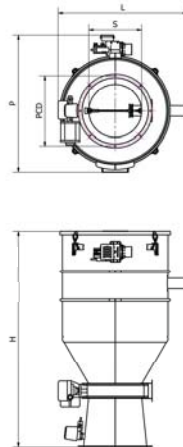


VISNET CONTROL BOX



## dimensions 100-160 L

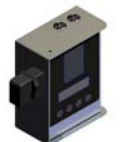
Receiver size	L mm	P mm	H mm	S mm	PCD
100 Liters	777	736	1236	∅ 360	8xM6 ∅ 400
160 Liters	777	736	1446	∅ 360	8xM6 ∅ 400



BASIC CONTROL BOX

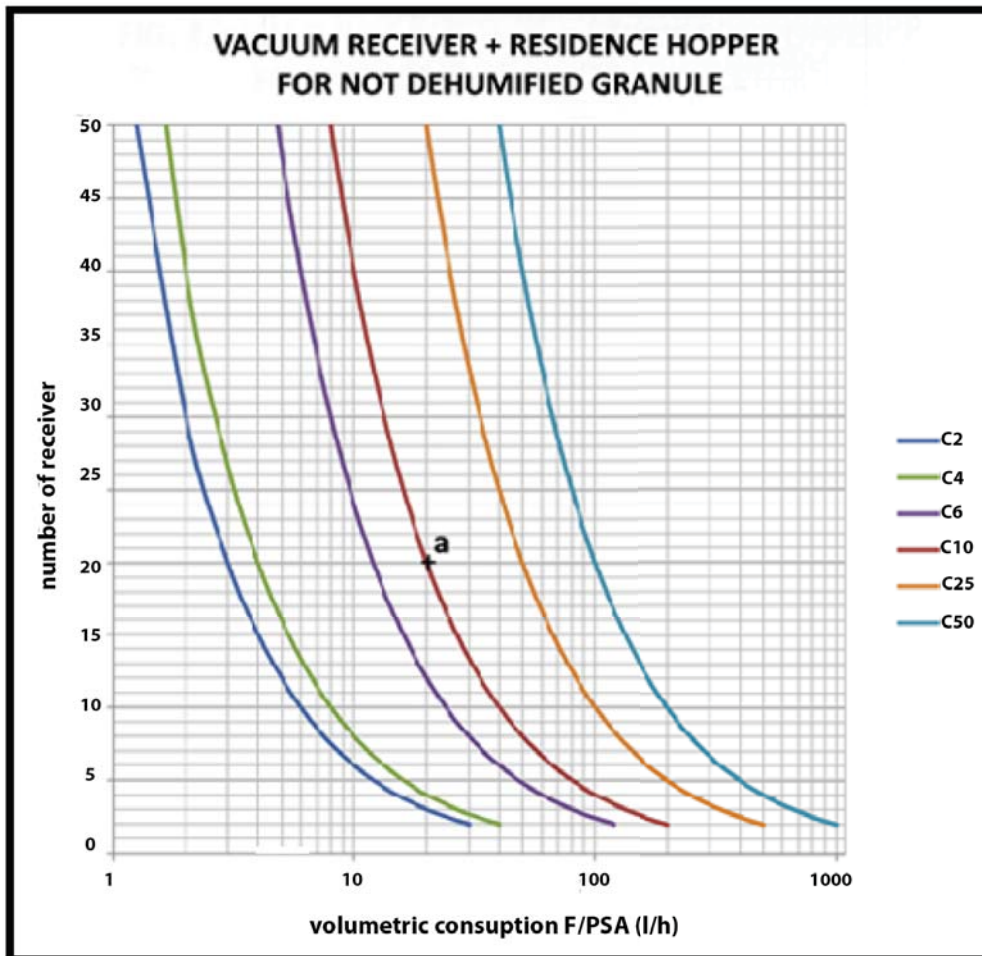


VISNET CONTROL BOX





## application examples



## PLANT DIMENSIONING

To size the feeding plant, the side diagram must be verified according to receivers size.

For example, when the plant has 20 receivers of 10L capacity, the condition is represented at point "a" indicating a maximum volumetric capacity of 20 L/h mfor each receiver.

Mass throughput is calculated multiplying by the bulk density.